



**PROMOTING FARM BIODIVERSITY**



# THE IMPORTANCE OF HEDGES

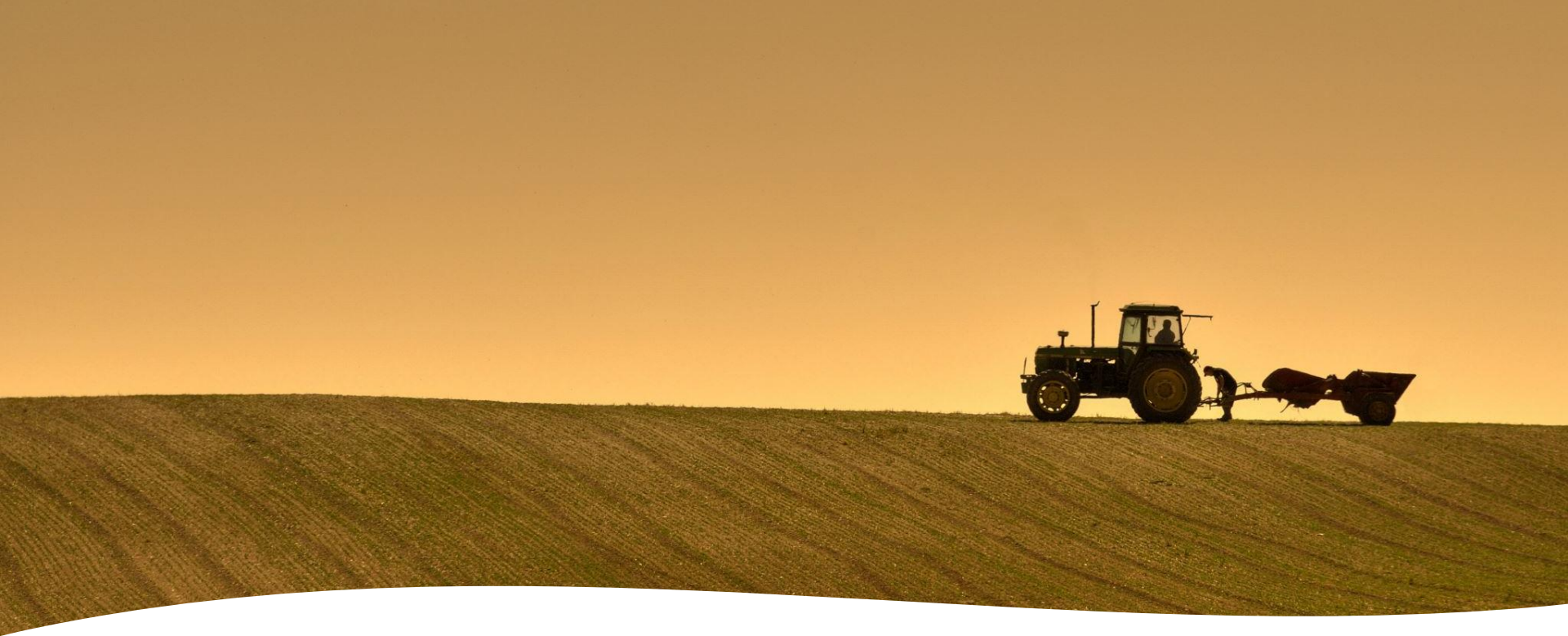




Andrew Robinson (Farms) Partnership - Organic since 1999  
A mixed farm, with an Aberdeen Angus Beef Herd, Arable Crops & Sheep







# Hedgerow Loss

- **Between the 1940s and the 1990s about 25% of UK hedgerows were destroyed – about 4,000 miles a year!**
- **Farmers were encouraged to intensify the production of food so hedges were removed to make more room for crops and make it easier for machines to move around the fields.**
- **Hedgerow loss has slowed since the 1990s, but neglect and damage remain significant threats.**



# HEDGE NEGLECT





# HEDGES IN ENGLAND

## LET'S LOOK ON THE POSITIVE SIDE!

### A GREAT, HEALTHY, DIVERSE HEDGE

- There are 242,334 miles of farmland hedges in England
- It's now illegal to remove any hedge on agricultural land
- Between 2004 and 2022, 3,272 miles of hedges have been planted via ELM's schemes (Countryside Stewardship)
- In 2022 alone 1105 miles of new hedges of have been planted and 1146 miles of gapping up has been achieved
- Hedges may only be cut between beginning of September and the end of February. Many farms leave hedges late into the winter to allow birds to clear as many berries as possible
- A Devon farmer, Robert Walton, over two years, has counted 2070 different species of flora and fauna in an ancient hedge on his farm, he included fungi, mosses, lichens and even tiny freshwater molluscs in the ditch attached to the hedge!

Knowledge and dedication!



#### FARMING OPINION

CPRE SURVEY JULY 2022



#### Key findings

##### Importance of hedgerows

**86%** of farmers surveyed believe hedgerows are important to them and their business.

##### CPRE's hedgerow expansion target

**82%** of farmers surveyed support CPRE's campaign for a target to increase hedgerows by 40% by 2050, if the target is properly funded through ELMs or other government policies.

##### Benefits of hedgerows

**86%** of farmers surveyed see wildlife habitat/nature corridors as the top benefit of having hedgerows, with 64% seeing shelter for crops or livestock as the second top benefit.

##### Barriers to planting hedgerows

**94%** of respondents have experienced barriers to planting hedgerows, with the top two barriers being lack of resource (time/money) and the nature of government support.

##### Government schemes

**70%** of respondents would be encouraged to plant more hedgerows with government incentives and 54% would plant more with simple, accessible schemes.

##### New hedgerow planting

**59%** of respondents have planted hedgerows in the last ten years and are likely to plant more in the next five years.

# HEDGES ON OUR FARMS

## TUGHALL

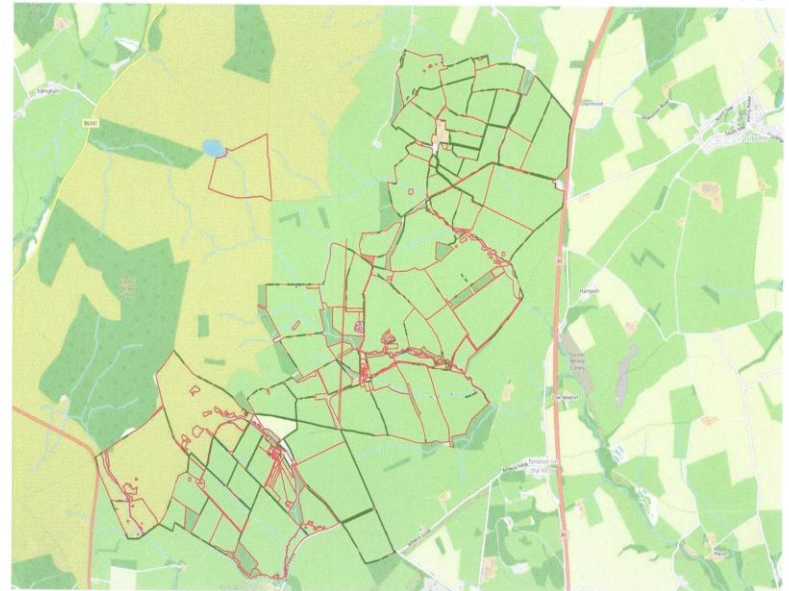
Land App



Produced on Land App for 6, 2025.  
© CybertwinMap.com

## GLANTLEES, SHIELDYKES & SNIPEHOUSE

Land App



Produced on Land App for 6, 2025.  
© CybertwinMap.com

1000 m  
Scale 1:2000 (A4)  
N

**WE HAVE A TOTAL OF 34.4 miles OF HEDGES ON OUR FARMS  
(OUTLINED IN GREEN)**



# PROGRESSIVE CHANGE



Apple Maps

Legal

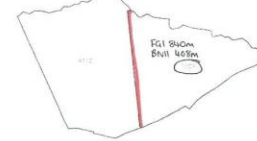
Andrew Robinson (Farms) Partnership .

106171080 / 1914208

2014 Application Year

Agreement Name: Sheldyken Snipehouse Tughall Capital 2014

Map 1 of 7



- Fc1 Single fence only
- - - Fc2 Single Fence only
- Fc1 Single fence & BN11
- Fc1 double fence & BN11
- Fc1 Double fence only



GRID REF: NU15800755 (MAP CENTRE)

SCALE: 1:10000



# HEDGES – DIVERSE BENEFITS

- HEDGE ESTABLISHED 26 YEARS AGO
- IT'S OFFERING WIND PROTECTION & SHADE FOR LIVESTOCK
- PRIMROSES HAVE NATURALISED WHERE STOCK CAN'T GRAZE!
- THE HEDGE IS ALSO SERVING AS A WILDLIFE CORRIDOR LINKING UP TO A SMALL CONIFER WOOD. HEDGES ARE A FARM'S ARTERIES



- THIS HEDGE WAS GAPPED UP FIVE YEARS AGO AND RE-FENCED TO ALLOW IT MORE SPACE
- HAWTHORN, CRAB APPLE AND ELDER ARE PICTURED
- GRASSY UNDERGROWTH FOR MAMMALS AND INSECTS AND GREATER STICHWORT IN FOREGROUND





# HEDGES – DIVERSE BENEFITS

**ONE OF OUR HEDGES WITH GORSE GIVING THE BENEFIT OF SOME OF THE VERY EARLIEST FLOWERS, YIELDING POLLEN AND NECTAR FOR OUR HONEYBEES AND EARLY FORAGING INSECTS**



**IVY IN A HEDGE WILL PROVIDE THE VERY LAST BURST OF FOOD FOR BUTTERFLIES IN LATE OCTOBER – WE COUNTED OVER FOURTY RED ADMIRALS ON ONE SMALL LENGTH OF A FARM HEDGE**







**HONOUR THE WEB OF LIFE, SEEK THE  
PATTERN THAT CONNECTS, PERCIEVE  
THE INTERCONNECTEDNESS OF OUR  
WORLD AND RECOGNISE THE ONENESS  
OF OUR WORLD**







## HEDGES WITH TREES PROVIDE HIGH VANTAGE POINTS FOR NESTING BIRDS







**NAME ANY OF THESE ? – ONE IS EASY !!!**



# LAND FOR WILDLIFE BIO DIVERSITY BEYOND THE HEDGE

## WILDFLOWER ARABLE MARGIN



46.65 acres

## GRASS MARGIN



14.50 acres



# LAND FOR WILDLIFE

## BIO DIVERSITY BEYOND THE HEDGE

**24 METRE MARGIN OF OATS LEFT  
UNHARVESTED FOR BIRDS (44 acres)**



**PLOTS FOR BIRDS, POLLINATORS AND  
SMALL MAMMALS (49 acres)**





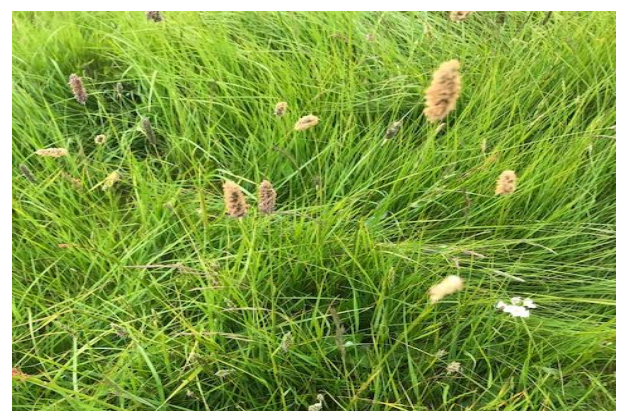


## REGENERATIVE AGRICULTURE AND OTHER EXPERIMENTS !





# HAY MEADOW RESTORATION















**OUR NEW BARN OWL SHED – BUILT BY FIPL VOLUNTEERS  
MANY THANKS FOR ALL THEIR HELP**



